

Variable-Leaved Water-Milfoil (*Myriophyllum heterophyllum*)

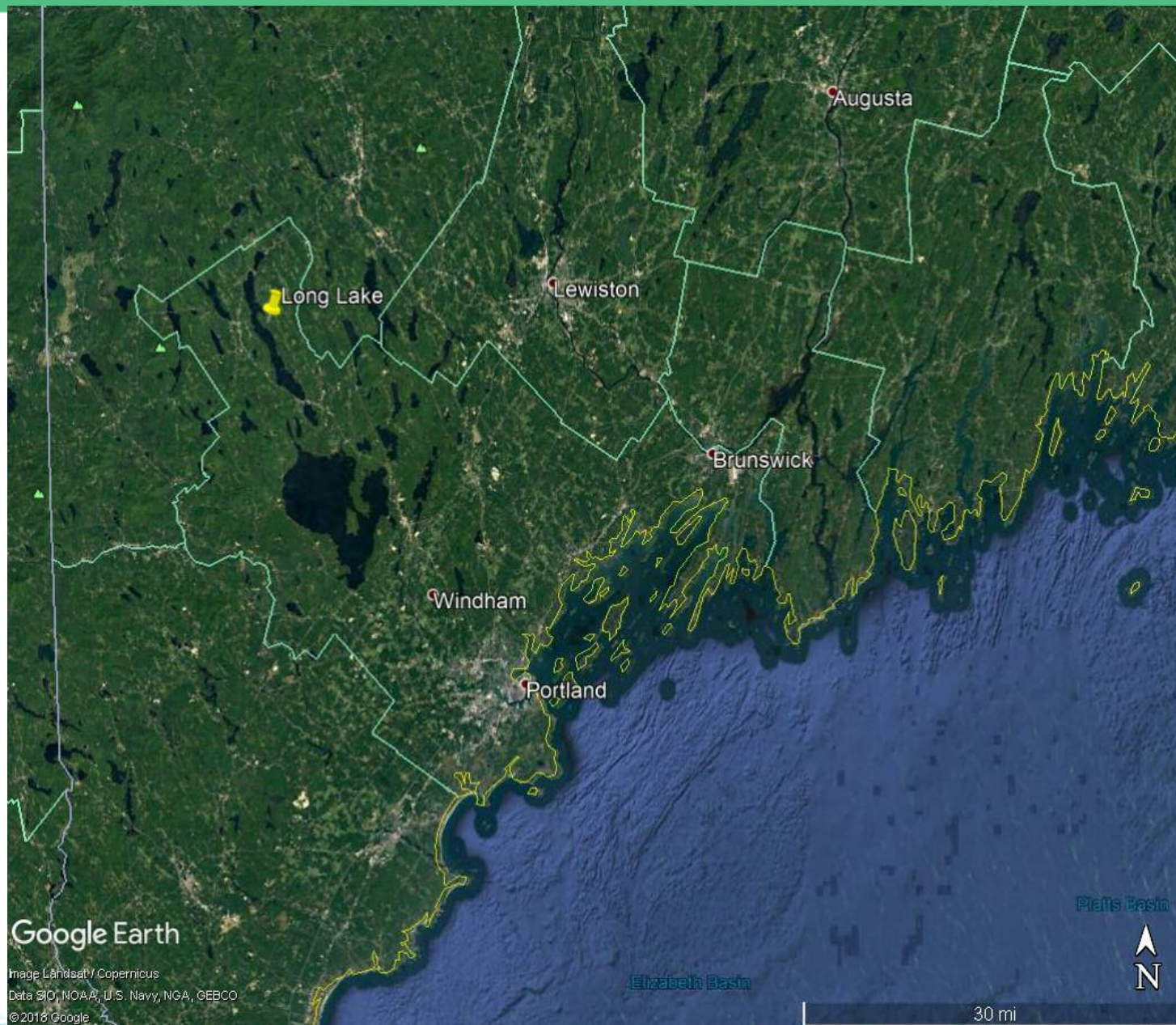
Rapid Response
Long Lake, Maine



John McPhedran
Maine Department of
Environmental Protection

MAINE DEPARTMENT OF ENVIRONMENTAL PROTECTION

Protecting Maine's Air, Land and Water



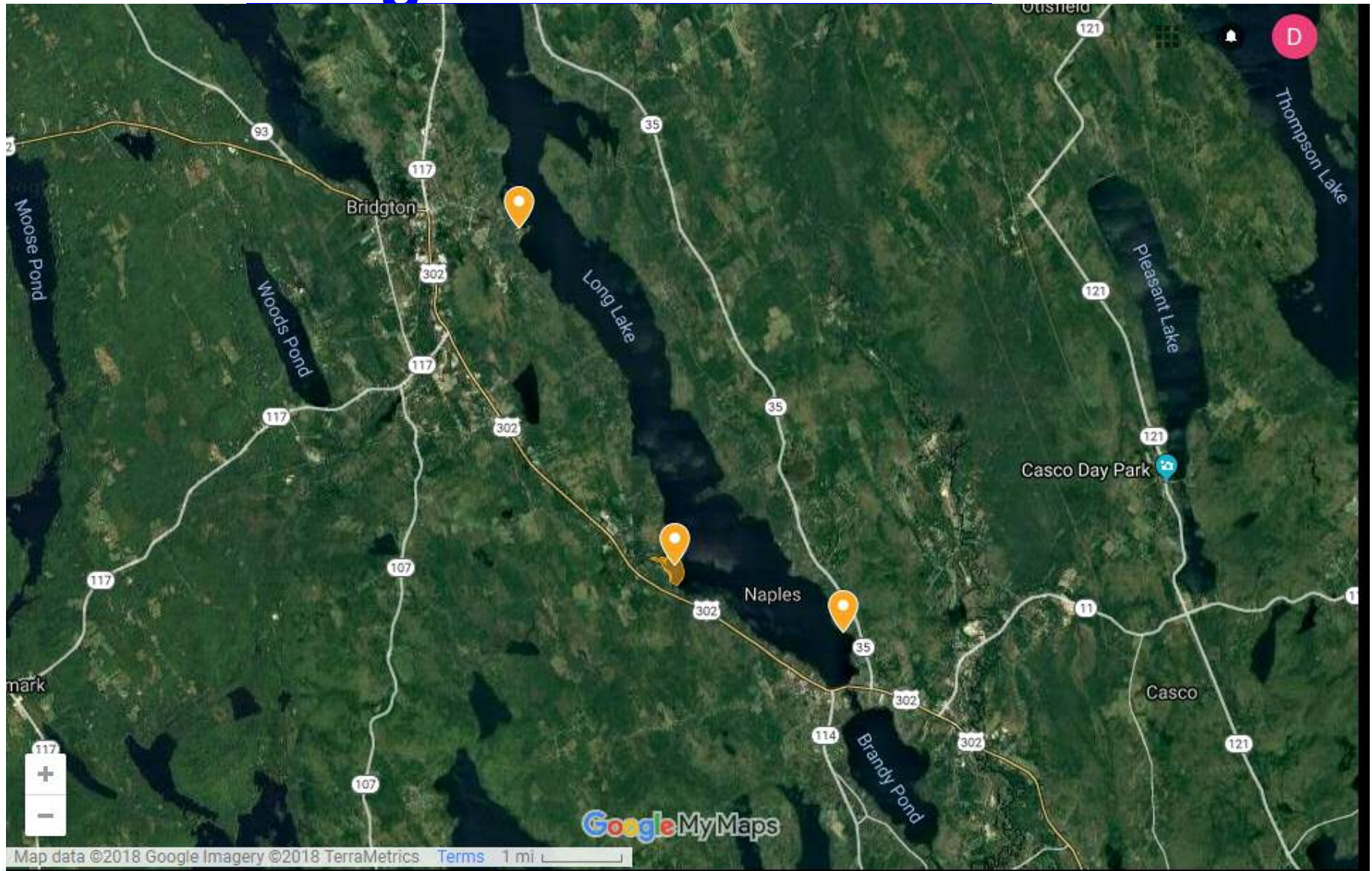
Discovery August 2017



MAINE DEPARTMENT OF ENVIRONMENTAL PROTECTION

www.maine.gov/dep

Long Lake Infestation



2018 Methods

DASH

(Diver Assisted Suction Harvesting)





MAINE DEPARTMENT OF ENVIRONMENTAL PROTECTION

www.maine.gov/dep



MAINE DEPARTMENT OF ENVIRONMENTAL PROTECTION

www.maine.gov/dep

Benthic Barriers.

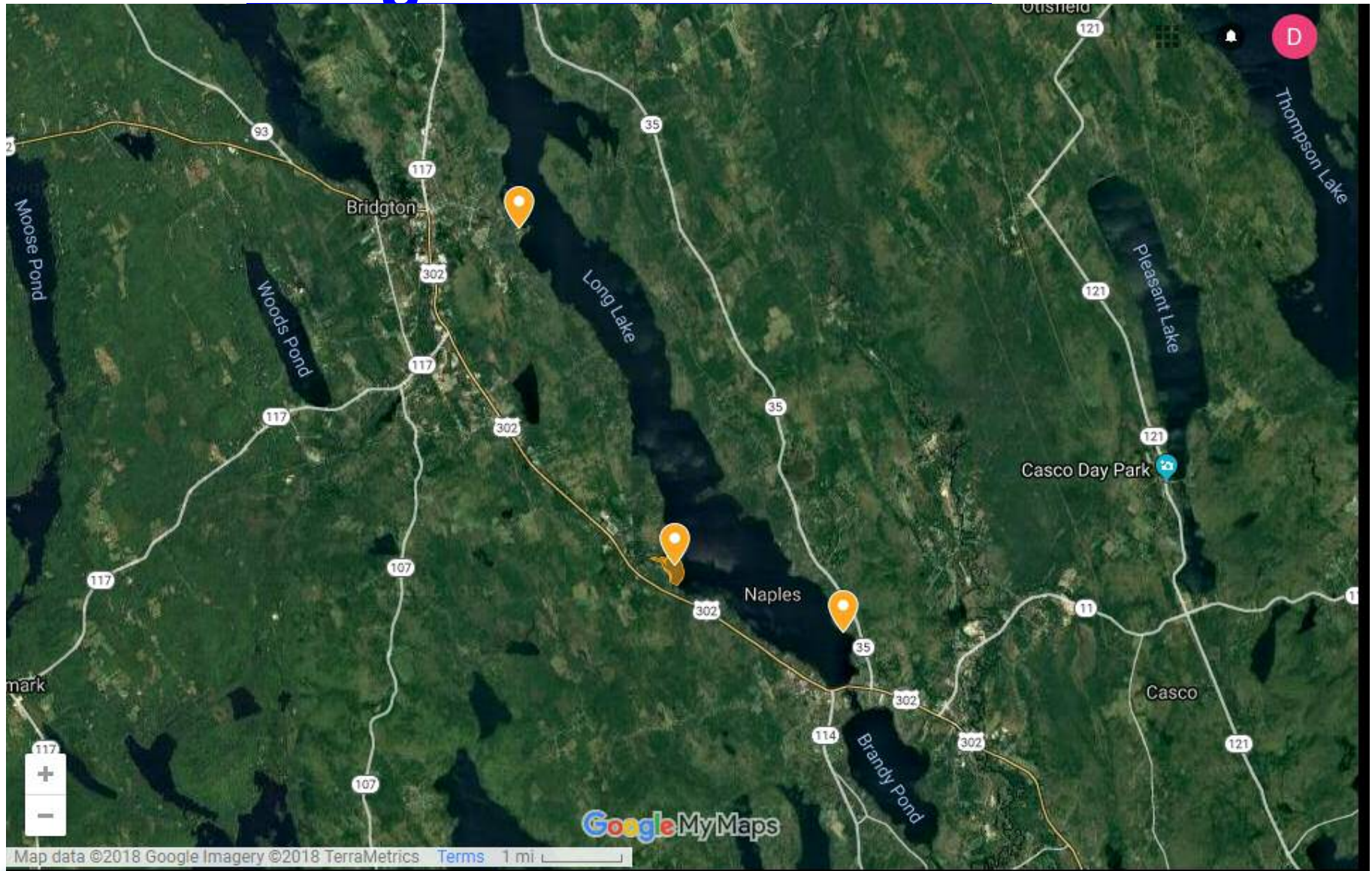


Long Lake Rapid Response Expenses

Divers	\$14,453.98
Project Coordinator (120 hours @ \$30/hr)	\$3,600.00
Fuel	\$292.48
Mileage	\$148.95
Equipment	\$1096.14
TOTAL EXPENSES	\$19,591.55



Long Lake Infestation



MAINE DEPARTMENT OF ENVIRONMENTAL PROTECTION

www.maine.gov/dep

Four Seasons Marina



Before



After





Contact:

John McPhedran

Maine DEP

john.mcphedran@maine.gov

[***www.maine.gov/dep***](http://www.maine.gov/dep)

